



PRODUCTS FOR THE EMEA MARKET

REGAL REXNORD™ INDUSTRIAL
POWERTRAIN SOLUTIONS



INDUSTRIES SERVED

Aggregate

Agriculture

Automotive

Cement

Food & Beverage

Marine

Material Handling

Mining

Transportation

REGAL REXNORD™ INDUSTRIAL POWERTRAIN SOLUTIONS

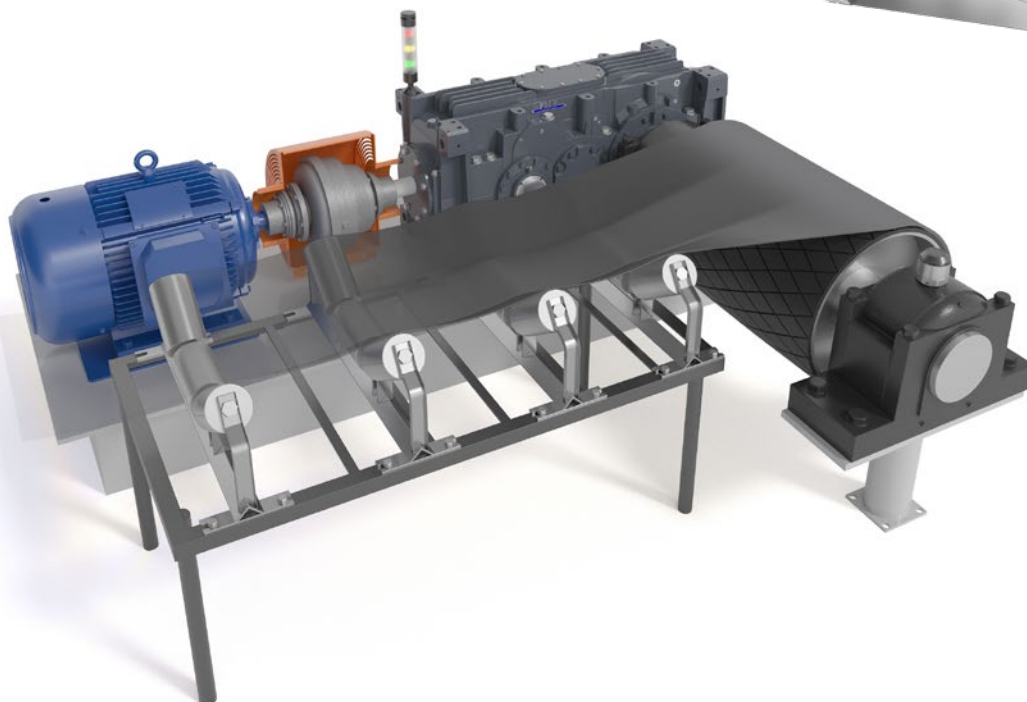
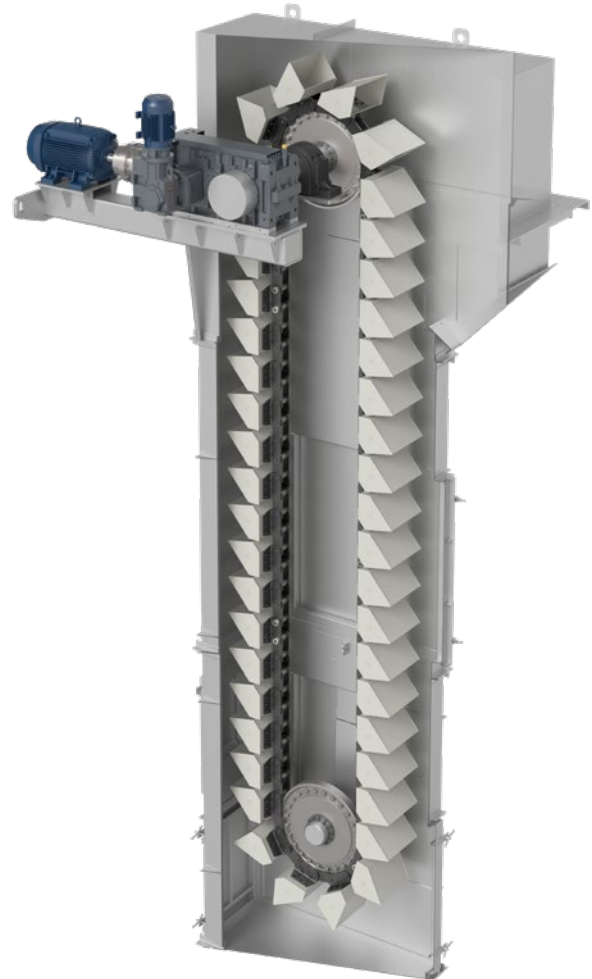
Regal Rexnord Corporation is a global leader in the engineering and manufacturing of industrial powertrain solutions and power transmission components, serving customers throughout the world. Our solutions are found in cement, food and beverage, intralogistics, agriculture, material handling, construction, mining, automotive, forestry, and more.

INNOVATING SOLUTIONS TO INDUSTRY CHALLENGES

Regal Rexnord works with customers to solve their toughest challenges. **RexPro™ Engineered Steel Chain** is the latest example of innovation at its finest: a bucket elevator chain that is not just easier and faster to install, but is safer to install.

GLOBAL REACH, LOCAL PRESENCE

With manufacturing, service centers, and engineering support across the world, Regal Rexnord can meet you where you are. *We maintain stock in Europe to ensure our customers have what they need.*



INDUSTRY EXPERTISE

from the
Brands You

TRUST

Ameridrives™ offers a wide range of products including **Amerigear™** Gear Couplings and mill spindles, high performance **Ameriflex™** diaphragm couplings, **Turbolex Plus** High Performance Disc Couplings, and a full line of **Americardan** universal joints.

Bauer Gear Motor™ was founded in 1927 and has grown globally to become a preferred source for high-quality, extremely reliable geared motors. Bauer engineers develop technically advanced solutions that feature energy-efficient motors paired with optimal gearboxes to provide customers with the lowest possible cost of ownership.

Bibby Turboflex™ is a global leader in the design and manufacture of power transmission solutions, including highly-engineered industrial couplings and torque control equipment. Founded in 1917, Bibby products are relied on to eliminate downtime and optimise efficiency in applications around the world.

Boston Gear™ provides an extensive off-the-shelf product offering of more than 20,000 products combined with the ability to custom engineer unique solutions when required.

Centa® is an industry-leading manufacturer of torsionally soft couplings, primarily used in marine, construction, agriculture, and power generation.

Duralon self-lubricating filament bearings are made from corrosion-resistant fiberglass and epoxy resin. These bearings are tough, lightweight, and easily customized.

Falk® industrial mechanical power transmission solutions has been providing high-quality, reliable and rugged products for more than 100 years.

Formsprag™, founded in 1943, has been the recognized leader in developing, manufacturing and delivering dependable, high precision overrunning and backstopping clutches. With a long history of supplying products for wide ranging applications, including aerospace and defence, mining, petrochem and energy, packaging, material handling etc., Formsprag has led the way in solving challenges requiring overrunning clutches by developing innovative solutions.

Industrial Clutch™ was established in 1930, designs and manufactures a complete line of dry and oil-immersed clutches and brakes ranging in size from 8 in. to over 40 in. diameter with torque capacities exceeding 4,000,000 lb.in.

Jaure® has been a brand leader since 1958 as a family of flexible couplings and transmission elements including the **Lamidisc®**, **MT-Series**, and **Barflex®**.

Kop-Flex™ has a strong reputation of high performance disc couplings, used in power generation, gas compression, and industrial process machinery.

Link-Belt™ mounted spherical roller bearings prove their performance with outstanding misalignment capabilities, field adjustable clearance, and excellent sealing options.

Marland Clutch™ has been producing heavy-duty overrunning clutches since 1931. Primary products are high torque backstops, footmont clutches for applications requiring uninterrupted, continuous operations, and clutch couplings, with all these products utilizing the highly reliable design concepts with cylindrical rollers on inclined cam planes. Marland clutches are operating in critical applications worldwide, such as in mining conveyors, dual drive fans in petrochemical plants and power stations, auxiliary drives in cement kilns, etc.

McGill® metric **CAMROL™** cam followers feature **LUBRI-DISC™** seals that provide positive protection against contamination and loss of lubricant.

ModSort™ divert and transfer conveyor modules offer unlimited motion control in a simple modular package. The **ModSort** module can do left and right sorting on the fly for a wide range of package types and sizes.

Our flagship brands have amassed billions of hours of reliable operation and are well-known throughout the industry for their high quality.

Perceptiv™ condition monitoring enables our customers to improve productivity, increase uptime, and enhance safety by monitoring equipment from a distance.

Rex™ high performance roller, leaf, and engineered chain exhibit outstanding performance in challenging conditions. **Rex RN Series** metric mounted spherical roller bearings with **SHURLOK™** tapered adapter were designed shaft-ready for ease of use and durability.

Rexnord® couplings keep industry moving forward with well-established, high quality coupling products for a broad range of industries.

Rexnord® KleanTop™ belts provide a plastic modular belting solution for conveyor applications requiring adherence to strict hygiene regulations.

Rexnord® MatTop® & TableTop® chains are engineered to satisfy a wide range of conveyor applications, with straight running and side-flexing chain designed to convey flawlessly.

Rollway® bearings play a significant role in the open ball and roller bearing industry, providing high quality bearings to OEM and end users for over 100 years.

Sealmaster® mounted ball bearings are engineered to reduce downtime. The IP69K-rated **PN Gold™** offers corrosion resistant solutions for washdown environments.

Stieber™, with more than 75 years of experience, is a global leader in the research, development and production of high-precision freewheels and backstops. Innovative engineering combined with advanced technologies allow Stieber, along with North American sister companies **Formsprag** and **Marland**, to be recognized as world leaders in the field of overrunning clutches and backstops.

Stromag™ has an extensive product range that includes flexible couplings, disc brakes, geared cam limit switches, an array of hydraulically, pneumatically, and electrically actuated brakes, and a complete line of electric, hydraulic and pneumatic clutches.

Svendborg Brakes'™ comprehensive product range makes us your answer to one-stop brake shopping and supply. Our complete braking solutions include extensive design services, market-leading products, a quality-focused supply chain and unmatched after sales services.

System Plast® is a global leader in high quality plastic conveyor chains, modular plastic belts, and industry-leading conveying components.

Tollok™ products have led the industry in reliable, highly engineered locking assemblies for more than 35 years. Ideal for use in heavy-duty and specially engineered environments.

Twiflex™, specialises in the design, manufacture and supply of advanced braking technology, and shaft Turning, Locking and Braking (TLB) systems. Founded in 1946, Twiflex produces caliper disc brake solutions, frequently for safety critical duty, for applications around the world.

Warner Electric™ designed and patented the first electromagnetic clutch/ brake more than 70 years ago and has pioneered every significant advance in the field since then. New technologies in the areas of design, materials and manufacturing have helped us develop clutches and brakes with longer life and exceptional performance.

Wichita Clutch™ provide high speed acceleration and deceleration that are essential in today's process equipment. They are available in a wide variety of designs and mounting configurations and are used extensively around the world by leading OEMs in metalworking, steel, pulp/paper, material handling, paper converting, mining, and energy.

PRODUCTS AT A GLANCE

AMERIDRIVES™ A REGAL REXNORD BRAND

Couplings



Ameriflex HP Diaphragm – Aero Derivate
Gas Turbine for Power Generation

Universal Joints

BIBBY TURBOFLEX™ A REGAL REXNORD BRAND

Compressor, Power Generation & Pumps



Bibby HP - Marine Propulsion,
Compressor & Power
Generation Applications



Bibby Torsiflex – Pumps,
Compressors, Fans & General
Industrial Applications

BAUER GEAR MOTOR™ A REGAL REXNORD BRAND

Geared Motors



Helical Gear Motor
BG Series



Worm Geared Motor
BS Series



Bevel Geared Motor
BK Series



Bauer HiflexDRIVE



Energy Saving
Geared Motors

BOSTON GEAR™ A REGAL REXNORD BRAND

Gearing



700 Series (Cast Iron)



SS700 Series



SS2000 & SS200R



Centric



Open Gearing

Gearheads



XTRUE In-Line
Planetary



ValueTrue90 Helical
Planetary

PRODUCTS AT A GLANCE



Torsionally Soft Couplings



Centaflex®



Centax®



Centamax®



Centalink®

Driveshaft Couplings

Duralon™

Filament Bearings



FALK®

Elastomeric Couplings



Wrapflex®

Gear Couplings



Lifelign®

Grid Couplings



Steelflex®

Fluid Couplings



True Torque®

FORMSPRAG CLUTCH™

A REGAL REYNOLD BRAND

General Overrunning Clutches



FS0, HPI, FSR, FRB, FSA, FS, HPO, FSD

AS9100 Certified Products



Sprag Retainer Assemblies



Electromagnetic Clutches & Brakes

Gearbox Backstops High Speed



FHB, FRB, FS 20, FS 50, HSB

Bidirectional Backstops NoBacks



RL, FL
(Available with AS9100 Certification)

PRODUCTS AT A GLANCE



LK Series Pneumatic Clutches & Brakes



LKB



LK



LKT



LKM

Oil Immersed / Wet Clutches & Brakes



Clutch & Brake Combinations (CB)



Wet Brakes (HBA)



Wet Clutches (HC)



Barrel Couplings



Barflex®

Disc Couplings



Lamidisc®

Gear Couplings



MT-Series

Driveshaft Couplings



JCFS



Disc Couplings



High Performance

Torque Monitoring



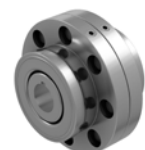
Powerlign™

Elastomeric Couplings



Max-C™

Gear Couplings



Fasts™

PRODUCTS AT A GLANCE

Link-Belt™

Bearings



Heavy Duty 300 Series

Roller Chain



Roller Chain

MODSORT™

ModSort™



ModSort Divert & Transfer Module

MARLAND CLUTCH™

A REGAL REYNOLD BRAND

Foot- Mount High Speed Clutches



CECON

Foot-Mount Releasable & Controllable Rollback Backstops



CEBMAG

Shaft Mount Low Speed Backstops



BCMA

McGILL®

Cam Followers



CAMROL™



CAMROL™ Yoke

SPHERE-ROL™



SPHERE-ROL

Needle



Needle
Standard Use



Needle
Heavy Duty



Needle
Inner Rings

Perceptiv™

Sentry Class



Sentry S2100 Condition Monitoring System
COMING SOON TO EUROPE

Torque Monitoring Solution



COMING SOON TO EUROPE

PRODUCTS AT A GLANCE

Rex™

Spherical Bearings



RN Series

Leaf Chain



RexPro™



RexHiPro™



RexAthletic™



RexDL™

Welded Steel



Narrow Mill, Wild Mill

Roller Chain



RexPro™



RexHiPro™



RexAthletic™



RexPlus™



RexCarbon™



RexPlusCarbon™



RexProX™

Engineered Steel Chain



RexPro™

Idler



Idler

Sprockets/ Traction Wheels



Sprockets



Traction Wheels

REXNORD

Elastomeric Couplings



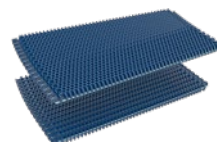
Omega®

Torque Limiters



Autogard®

KleanTop™ Conveyor Belts



1600 Series



PacTitan Pro™

Disc Couplings



Thomas™

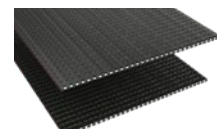


Addax™

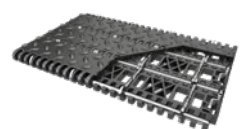


Euroflex™

MatTop® & TableTop® Chain



7005 Series



6999 Series Hybrid

PRODUCTS AT A GLANCE

ROLLWAY®

Unmounted Ball Bearings (mm / ")



Deep Groove



Self Aligning



Angular Contact



Thrust



Tandem Bearing



Tapered Thrust

Other

Mounted Ball Bearings (mm) & Housings



Pillow Block



Four Bolt



Two Bolt



Insert



Plummer Block Housing

Unmounted Roller Bearings



Cylindrical



Spherical



Tapered



Spherical Thrust



Accessories

SEALMASTER®

Mounted Ball Bearings



Material Handling



Performance



PN Gold™ (Cres™)

Mounted Roller Bearings



PN Gold (Cres)

PRODUCTS AT A GLANCE



Overrunning Clutches and Backstops



DC



AS



CSK



RSCl



AL / GFR

Backstops with Integral Torque Limiter



RDBK



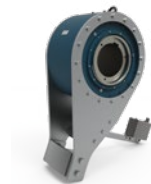
RDBR-E

Encased Overrunning Clutches



AL..G

Special Designs



Customer Specific Solutions



Clutches & Brakes



Spring Applied Brakes



Electromagnetic Disc Brakes



Thruster Disc Brakes



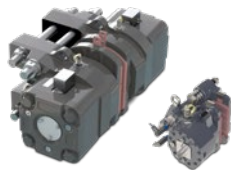
Multi-Disc Clutches & Brakes



2in1 Solution



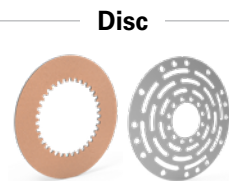
Drum Brakes



Hydraulic Disc Brakes



Hydraulic Power Packs



Friction Discs

Couplings



Flexible Couplings



Drum & Disc Couplings

Limit Switches



Geared Cam Limit Switches

Clutch & Brake Controls



SIDEIOUS & SIMAN
Monitoring Modules

PRODUCTS AT A GLANCE

SYSTEM PLAST®

Bearings



Two Bolt Flange



Pillow Block

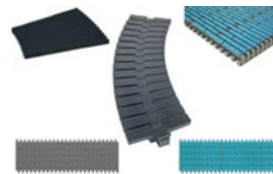


Nolu®-Clean

Conveying Components



Conveying Chains



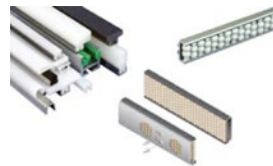
Modular Plastic Belts



Chain Sprockets



Modular Belt Sprockets



Guide Products



Conveying Components

SVENDBORG BRAKES™ A REGAL REXNORD BRAND

Hydraulic Brakes



Active Hydraulic Brakes



Failsafe Hydraulic Brakes



Custom Hydraulic Brakes

Hydraulic Power Units



On/Off / 2 Stage Braking / SOB0® iQ



Application Specific HPUs

Brake Discs



Brake Discs

Clutch & Brake Controls



SOB0 iQ Controller

PRODUCTS AT A GLANCE



Shrink Discs



Internal Locking Assemblies



Caliper Disc Brakes



Lever Brakes



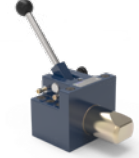
Modular Brakes

Turning, Locking & Braking



TLB Systems

Shaft Locking



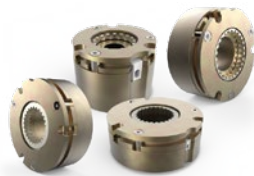
Locking Devices



Power Release Brakes



X-Small & Holding
WR Brake



Servo (SMB) Brake



PK (Very Thin) Brake



General Industrial
(ERX) Brake



High Dissipation Multi
Disc (EDI) Brake

Electromagnetic Clutch-Brakes



PTO
Clutch-Brake



Stationary Field
(SFM) Clutch



Wrap Spring
Clutch & Brake



Clutch-Brake
Package



Tooth
Clutch & Brake

Power Apply Brakes



Tensioning
Brake & Control



Variable Torque
Brake

Mechanical Clutches



Magnetic Capping
Headsets & Chucks

Clutch & Brake Controls



Monitoring
WES Sensor

PRODUCTS AT A GLANCE



AirMakk Brakes (Air Cooled Series)



AquaMakk Brakes (Water Cooled Series)



Tension Brakes



Standard Vent Clutch Couplings



Low Inertia Clutches & Brakes



Combination Clutch & Brakes



Grinding Mill Clutches



Mesur-Fil Fluid Couplings

VISIT OUR WEBSITE FOR MORE DETAILS
REGALREXNORD.COM

INDUSTRIES SERVED

Aggregate
Agriculture
Automotive
Cement
Food & Beverage
Marine
Material Handling
Mining
Transportation



Industrial Powertrain Solutions Regal Rexnord

Phone: +32 (0)3 450 72 89

Customerservice.belgium@regalrexnord.com

regalrexnord.com

The proper selection and application of products and components, including assuring that the product is safe for its intended use, are the responsibility of the customer. To view our Application Considerations, please visit <https://www.regalrexnord.com/Application-Considerations>.

To view our Standard Terms and Conditions of Sale, please visit <https://www.regalrexnord.com/Terms-and-Conditions-of-Sale> (which may redirect to other website locations based on product family).

"Regal Rexnord" is not indicative of legal entity. Refer to product purchase documentation for the applicable legal entity.

Regal Rexnord, CENTA, Duralon, Jaure, Link-Belt, McGill, ModSort, Perceptiv, Rex, Rexnord, Rollway, Sealmaster, System Plast, SHURLOK, LUBRI-DISC, PN Gold, CAMROL, Sphere-Rol, RexPro, RexHiPro, RexAthletic, RexPlus, RexCarbon, RexPlusCarbon, RexProX, CENTAFLEX, CENTAX, CENTAMAX, CENTALINK, Wrapflex, Lifelign, Steelflex, TrueTorque, Barflex, LAMIDISC, Powerlign, Cres, Max-C, Fast's, Omega, Autogard, KleanTop, PacTitan Pro, MatTop, TableTop, Thomas, Addax, Euroflex, Active Drive, Nolu, Ameridrives, Bibby Turboflex, Boston Gear, Formsprag Clutch, Industrial Clutch, Marland Clutch, Stieber, Stromag, Svendborg Brakes, Twiflex, Warner Electric, Wichita Clutch and Bauer Gear Motor are trademarks of Regal Rexnord Corporation or one of its affiliated companies.

© 2023 Regal Rexnord Corporation, All Rights Reserved. MCB23059E • Form# MB0138E

 **RegalRexnord™**