

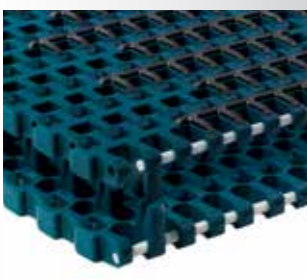


The Rexnord 1200 Series MatTop Chain is an extension of the Rexnord 1255 Side-flexing Modular Chain. This development involves a wider range of packaging and food applications in comparison with conventional side-flexing belts. The Rexnord 1200 Series MatTop Chain can be used for conveying processed food with direct contact as well as medium sized packaged products such as containers of canned and bottled beverage, and boxes or crates of meats, bagged foods, and frozen foods.

The reinforced end module makes it possible to carry heavier products around curves. Higher speed is possible thanks to the innovative guiding TAB underneath the chain. This TAB is equipped with a separate sliding block that optimizes friction and PV resistance in the curve, without compromising the strength of the chain.

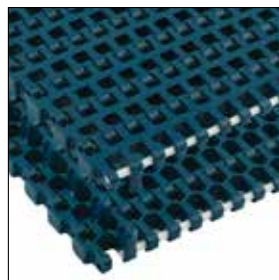
The tight radius inner module makes it possible to construct conveyors in the most compact way, saving valuable floor space in between packaging equipment.

Rexnord 1200 SuperGrip™ Series



Rexnord 1200 Series MatTop Side-flexing Chain

1255 and 1255 SuperGrip



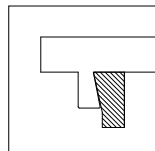
STANDARD WORK LOAD | STANDARD RADIUS

1.25" Flexbelt Standard

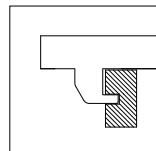
- Direct food contact capable
- Working load in curve: 450 lbs (2000 N)
- Radius: 2.0 times chain width
- Standard chain width from 10.0 inches (255 millimeters) up to 30.1 inches (765 mm)
- Side-flexing for "S" type conveyors

Available guiding systems:

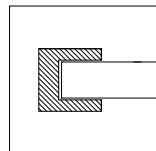
Inner radius:



Positrack RBP

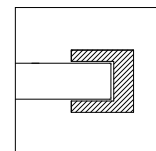


Tab (RBT)

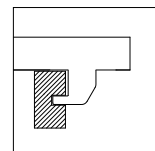


Flat (RB)

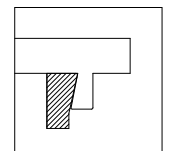
Outer radius:



Flat (RB)

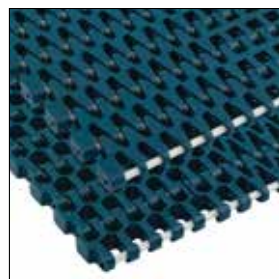


Tab (RBT)



Positrack RBP

1275



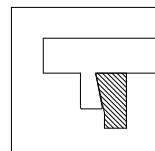
STANDARD WORK LOAD | TIGHT RADIUS

1.25" Flexbelt with tight fit inner radius modules

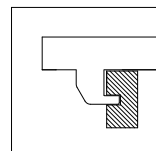
- Direct food contact capable
- Working load in curve: 450 lbs (2000 N)
- Radius: 1.2 times chain width (as small as 23.4 inch 595 mm); wider chain from 1.2 up to 1.5 times (765 mm)
- Standard chain width from 10.0 inches (255 mm) up to 30.1 inches (765 mm)

Available guiding systems:

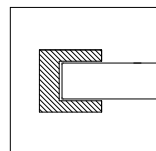
Inner radius:



Positrack RBP

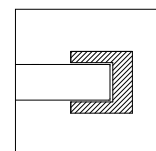


Tab (RBT)

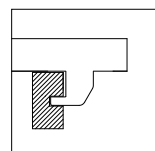


Flat (RB)

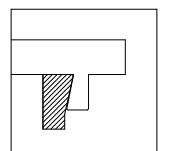
Outer radius:



Flat (RB)

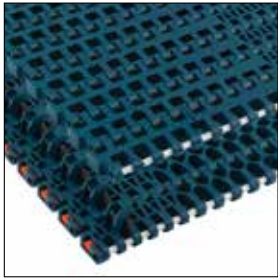


Tab (RBT)



Positrack RBP

1265



HIGH WORK LOAD | STANDARD RADIUS

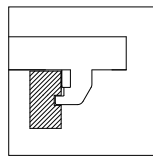
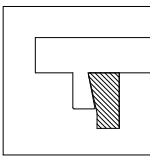
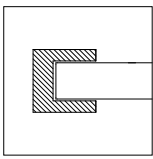
1.25" Flexbelt with reinforced outer modules

- Working load in curve: 675 lbs (3000 N)
- Radius: 2.0 times chain width
- Standard chain width from 10.0 inches (255 mm) up to 40.0 inches (1020 mm)

Available guiding systems:

Inner radius:

Outer radius:

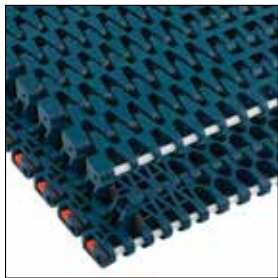


Flat (RB)

RBP Positrack

Tab (RBT)

1285



HIGH WORKING LOAD | TIGHT RADIUS

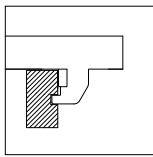
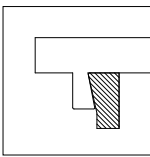
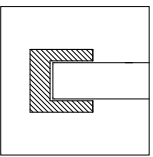
1.25" Flexbelt with tight fit inner radius modules and reinforced outer modules

- Working load in curve: 675 lbs (3000 N)
- Compact design due to radius width ratio as small as 1.2 (for chain widths up to 23.4 inches 595 mm); wider chain from 1.2 up to 1.5 times
- Standard chain width from 16.7 inches (425 mm) up to 40.0 inches (1020 mm)

Available guiding systems:

Inner radius:

Outer radius:



Flat (RB)

RBP Positrack

Tab (RBT)

Features and Benefits

- Reinforced end module allows up to 50% more weight of conveyed product
- Maximum speed up to 75 m/min, depending on the load on the chain
- Compact design due to radius width ratio as small as 1.2 (for chain widths up to 23.4 inches 595 mm)
- Smooth product handling because of large support surface
- Maximum load on straight sections 1500 lbs (22000 N/m)
- Reinforced TAB guiding with sliding block system
- Proven XLG polyacetal for low friction and high strength
- Available in acetal and polypropylene materials in different colors for all of your application needs
- Increased versatility, as both inner and outer modules can be combined with the existing 1255-series
- Standard widths from 10.0 inches (255 mm) up to 40.1 inches (1020 mm) with incremental steps of 3.34 inches (85 mm) ; special widths upon request